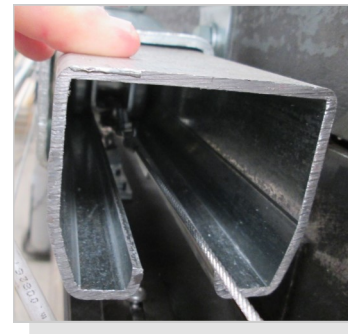
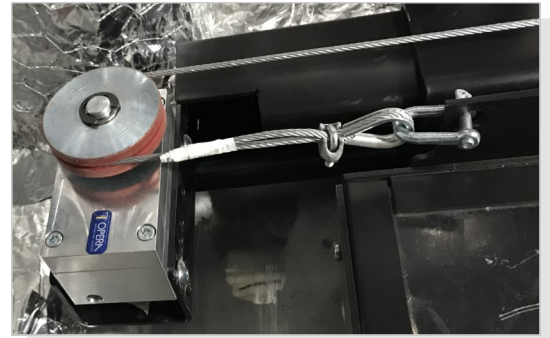




# A60 SLIDING DOORS

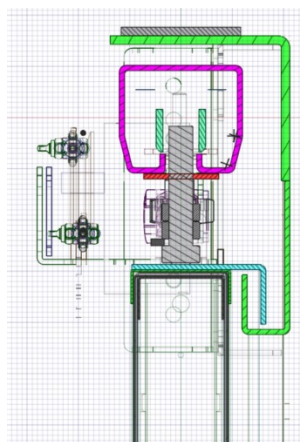
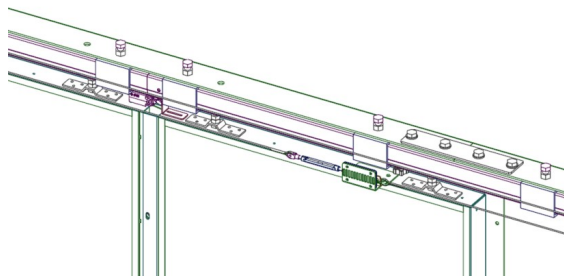
## P\_2SL-A60Y (double leaf)

1°+2° Fire Test with Extra Time



### OPTIONALS

- Hull Interface (window)
- Round porthole (window)
- Noise reduction kit upper(counterweight)
- Noise reduction kit lower (lower guide roller)
- Carter for counterweight on upper + lower part (side)
- Carter for rail zone
- Automation kit :
  - ESD-003 (Bimar)



### STANDARD FEATURES :

- IMO MED Certification A60 Rated Class
- Nr 4 Adjustable trolley "heavy duty"
- Galvanized upper rail "high load"
- Closing device : counterweight + cable guide
- Lockset "AL\_KLN" or without lockset (for automated doors)
- Standard painting powder coating RAL codes
- 2 type of sill configuration
- Carter for counterweight with upper and lower inspection hatch



**Bimar Srl**

Via San Giuseppe, 5 Z.I. Piano di Quercia - 54016 Licciana Nardi (MS) -- ITALY  
 P.IVA / Vat : 01497420115 - www.bimaritalia.com - info@bimaritalia.com

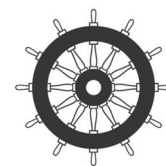




# A60 SLIDING DOORS

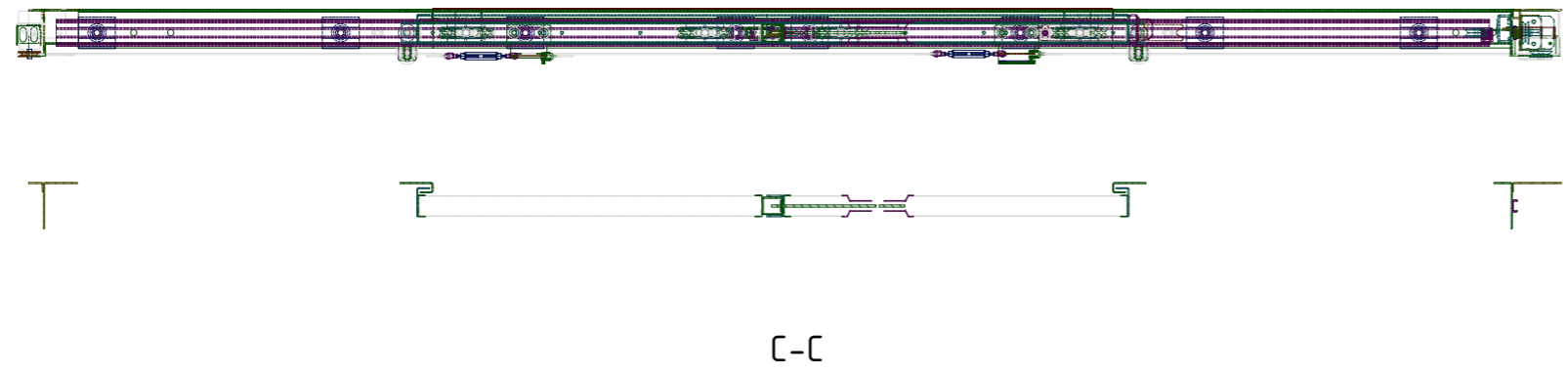
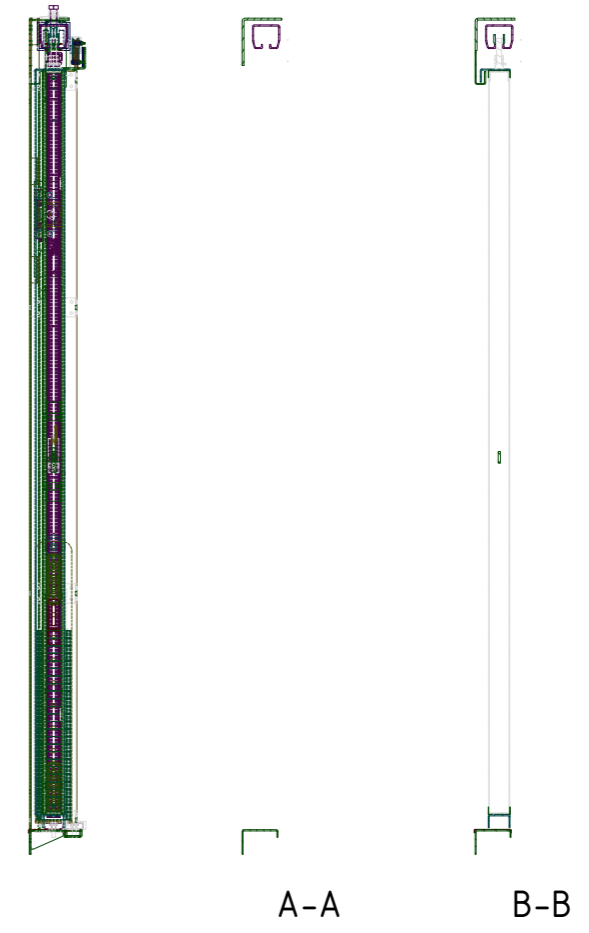
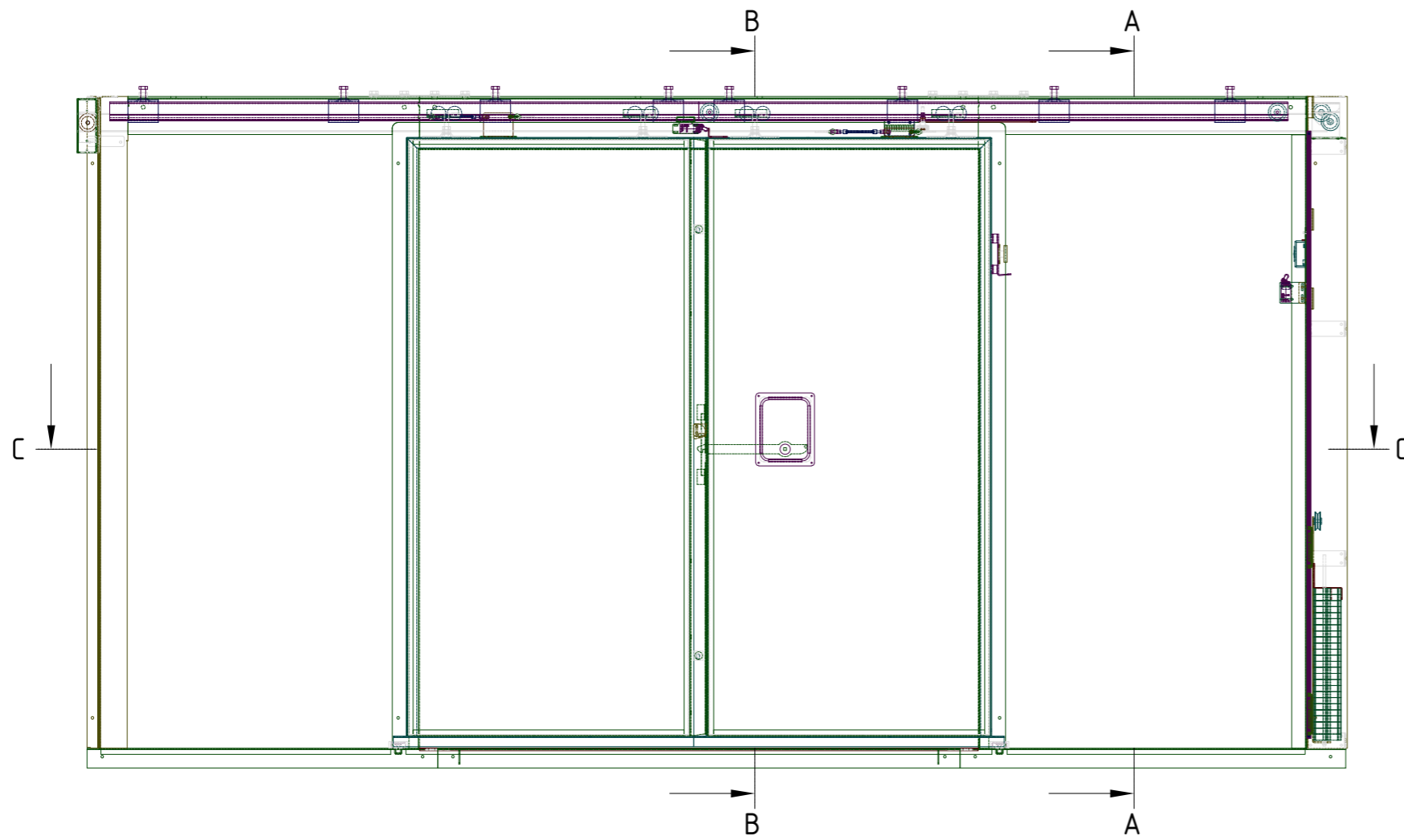
## P\_2SL-A60Y (double leaf)

### MAIN FEATURES



1. **Art. name:** P\_2SL-A60Y
2. **Reference international rules:** SOLAS 74/88 Chapter II-2/9 – European Directive 96/98/CE (MED) and further modifications.
3. **Classification:** A60 rated class fire door, non watertight.
4. **Maximum dimensions:** Clear Opening 2200x2345 mm.
5. **Door type:** double leaf, sliding type.
6. **Leaf construction:** sandwich type, steel foil – rock wool and calcium-silicate – steel foil
7. **Leaf thickness:** 56 mm.
8. **Leaf finishing types:**
  - Galvanized steel (rough)
  - RAL or NCS painted
  - PVC pre-coated (several finishing types)
9. **Weight:** ~ 315 Kg. The weight refers to the above max dimensions (CO 2200x2345 mm). It includes upper rail, supports, leaf itself weight. That weight doesn't include leaf covers or any rail cover or counterweight cover.
10. **Leaf covering:** finishing cover on both the leaf sides available. Maximum applicable thickness : 3 mm.
11. **Door closing:** by counterweight and cable system. Closing speed adjustable by hydraulic brake device.
12. **Lock:** stainless steel, no vibrating, concealed on leaf thickness. Certified also without lock (only a concealed handle to operate the door). Standard backset : 300 mm
13. **Upper Rail :** Galvanized profile suitable for heavy duty load
14. **Leaf frame finishing:** RAL or NCS painted or Stainless steel (satin or polished)
15. **Accessories on request :**
  - Window 400x400 mm
  - Porthole  $\phi$  300 mm
  - Inductive proximity sensor (remote close/open position detection).
  - Electro magnet to keep door open and releasible from wheelhouse or by local push button.
  - Noise reduction kit for counterweight in order to avoid noise/vibrations in open position and for lower guide in order to avoid noise/vibrations in open position





00	05/02/2026	Prima emissione			Tot
REV.	DATE:	DESCRIZIONE / ISSUE			APPROVED
		Committente/Buyer:	Foglio/sheet:	Disegno # / Drawing # :	
				1 di 1	
		Costruzione/Ship Name:	Commissa/Job:	Scala / Scale :	
				1:xx	
		Titolo / Title:			
		Manual A60 class rated sliding door (double leaf) P_2SL-A60Y			



**BIMAR SRL**  
 Via San Giuseppe,5  
 Licciana Nardi (MS) - ITALY  
 TEL : +39 0187 415455  
 www.bimaritalia.com