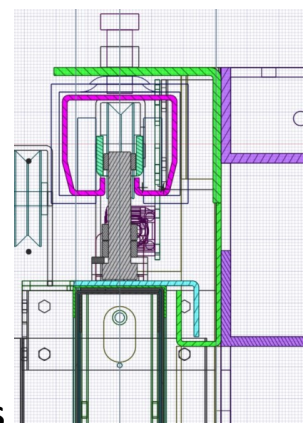
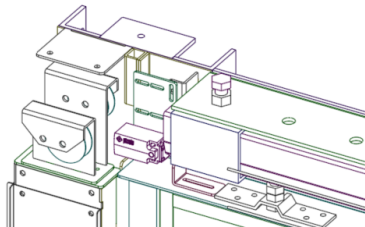




A60 SLIDING DOORS

P_1SL-A60Y (single leaf)



OPTIONALS

- Hull interface (alluminium or steel)
- Square porthole (window)
- Round porthole (window)
- Noise reduction kit (counterweight+lower guide roller)
- Carter for counterweight on upper + lower part (side)
- Carter for rail zone
- Automation kit (suggested for CO>900mm):
 - ESD_003 (Bimar)

STANDARD FEATURES :

- IMO MED Certification A60 Rated Class
- Nr 2 Adjustable trolley
- Galvanized upper rail "high load"
- Closing device : counterweight + cable guide
- Standard painting powder coating RAL codes
- 2 type of sill configuration
- Carter for counterweight with upper and lower inspection hatch



Bimar Srl

Via San Giuseppe, 5 Z.I. Piano di Quercia - 54016 Licciana Nardi (MS) -- ITALY
P.IVA / Vat : 01497420115 - www.bimaritalia.com - info@bimaritalia.com

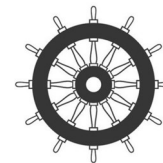




A60 SLIDING DOORS

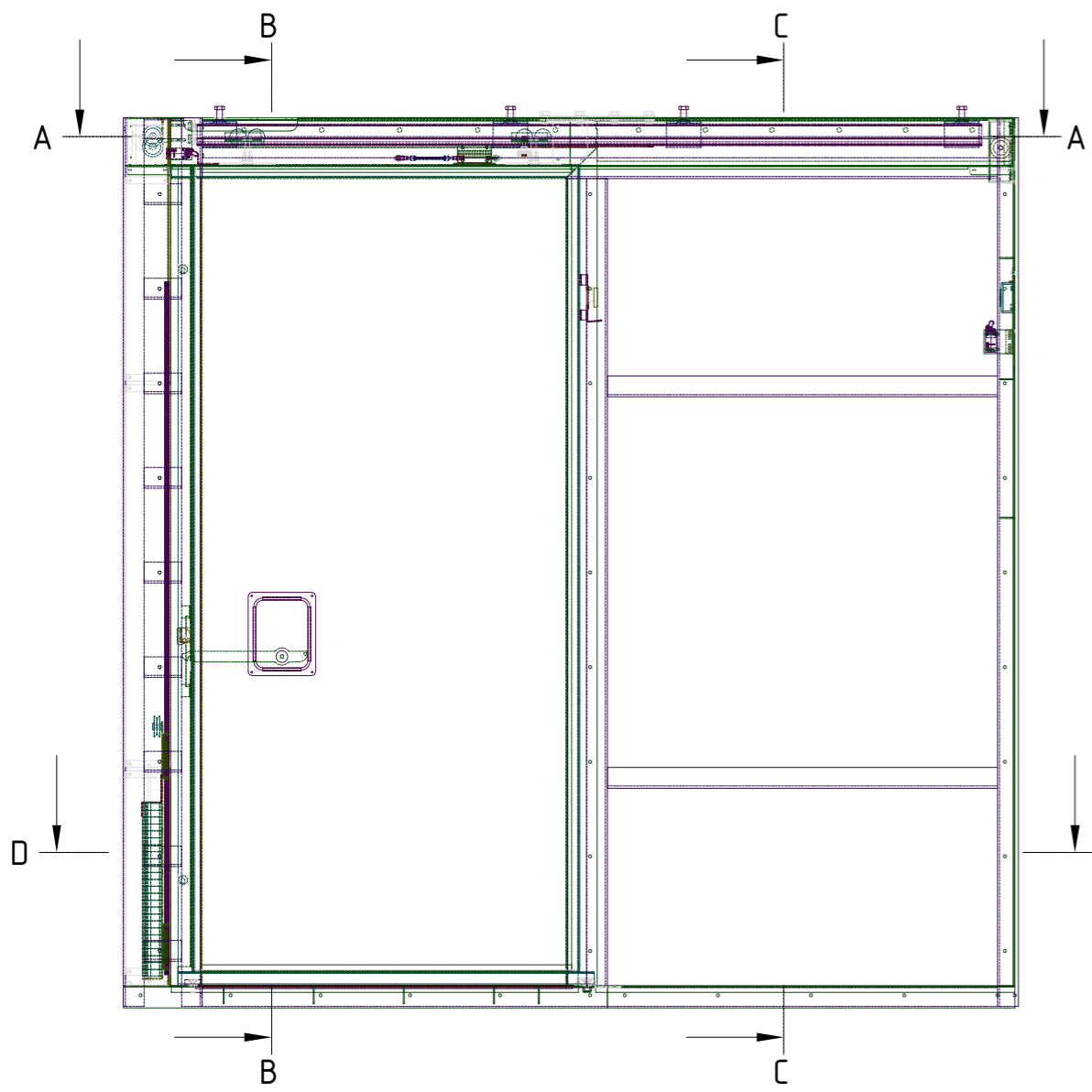
P_1SL-A60Y (single leaf)

MAIN FEATURES

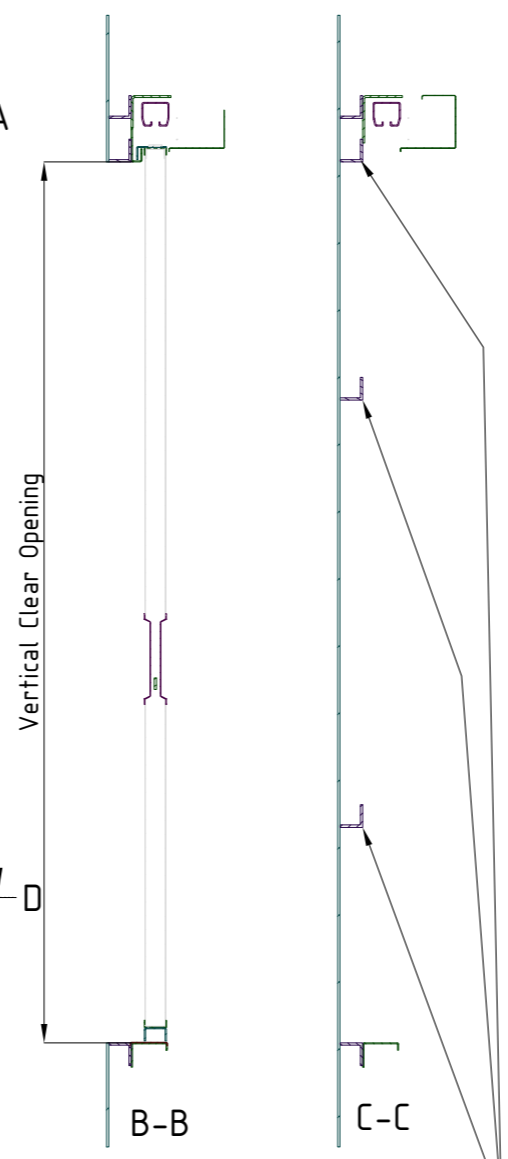


1. **Art. name:** P_1SL-A60Y
2. **Reference international rules:** SOLAS 74/88 Chapter II-2/9 – European Directive 96/98/CE (MED) and further modifications.
3. **Classification:** A60 rated class fire door, non watertight.
4. **Maximum dimensions:** Clear Opening 1800x2300 mm.
5. **Door type:** single leaf, sliding type.
6. **Leaf construction:** sandwich type, steel foil – rock wool and calcium-silicate – steel foil
7. **Leaf thickness:** 56 mm.
8. **Leaf finishing types:**
 - Galvanized steel (rough) for leaf covering
 - RAL or NCS painted
 - PVC pre-coated (several finishing types)
9. **Weight:** ~ 195 Kg. The weight refers to the above dimensions (CO 1800x2300 mm). It includes upper rail, supports, leaf itself weight. That weight doesn't include leaf covers or any rail cover or counterweight cover.
10. **Leaf covering:** finishing cover on both leaf sides available. Maximum applicable thickness : 3mm.
11. **Door closing:** by counterweight and cable system. Closing speed adjustable by hydraulic brake device.
12. **Lock:** stainless steel, no vibrating, concealed on leaf thickness. Certified also without lock (only a concealed handle to operate the door).
13. **Upper Rail :** Galvanized profile suitable for heavy duty load
14. **Leaf frame (trimlist) finishing:** RAL or NCS painted or Stainless steel (satin or polished)
15. **Door frame finishing:** RAL (standard) or NCS (on request) powder coating.
16. **Accessories (on request):**
 - Square Window 400x400 mm
 - Round Porthole ϕ 300 mm
 - Inductive proximity sensor (remote close/open position detection).
 - Electro magnet to keep door open and releasible from wheelhouse or by local push button.
 - Noise reduction kit for counterweight in order to avoid noise/vibrations in open position
 - Noise reduction kit for lower guide in order to avoid noise/vibrations in open position

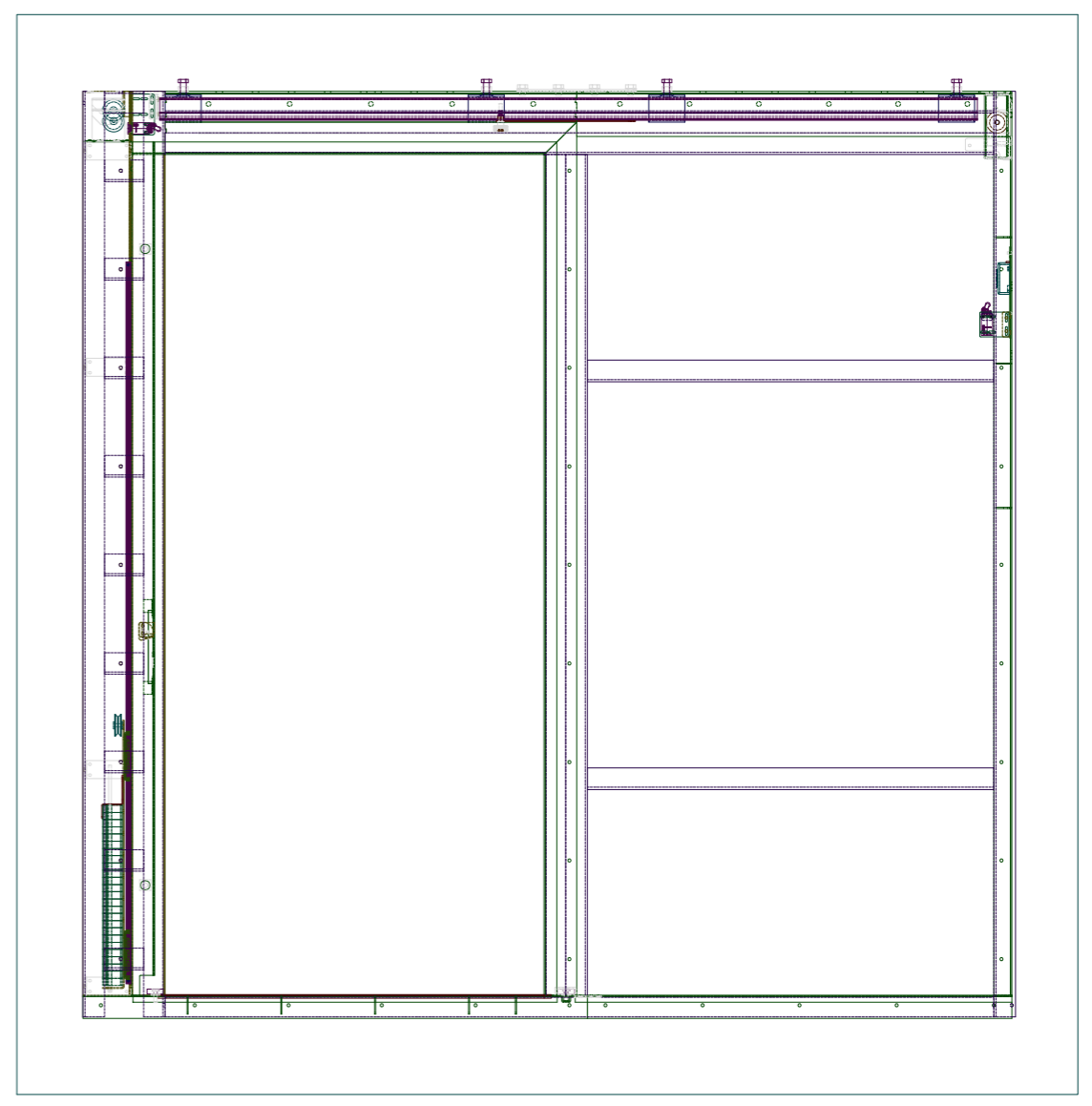




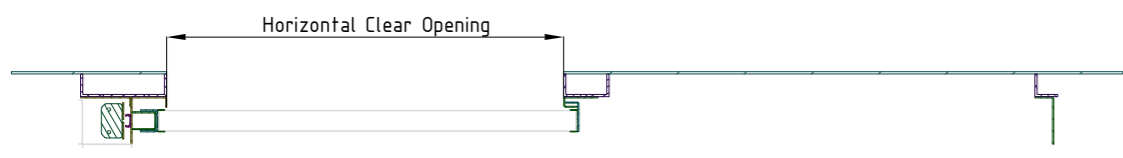
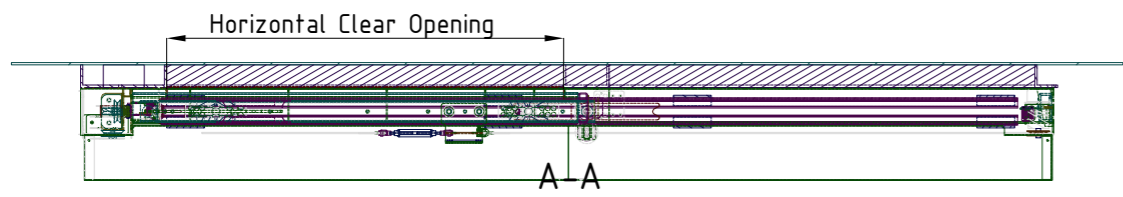
Front view (Door+Frame)




Hull interface :
This structure is supplied only if
requested (OPTIONAL)



Front view (Frame)



D-D

00	05/02/2026	Prima emissione			Toti
REV.	DATE:	DESCRIZIONE / ISSUE			APPROVED
 BIMAR SRL Via San Giuseppe,5 Licciana Nardi (MS) - ITALY TEL : +39 0187 415455 www.alcinav.it - info@alcinav.it		Committente/Buyer:	Foglio/sheet:	Disegno # / Drawing # :	
		Costruzione/Ship Name:	1 di 1	Commessa/Job:	Scala / Scale :
Titolo / Title:		Manual A60 class rated sliding door P_1SL-A60Y			
				1:xx	